



Flexible, Customizable Power
Solutions for Mission Critical
Success





STARLINE TRACK BUSWAY

The most critical decision, for mission critical facilities.

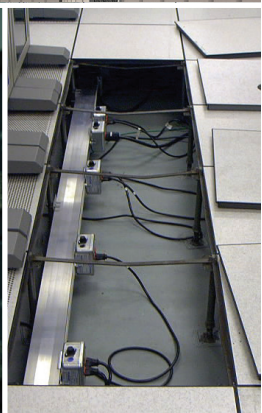


By their very nature, mission critical and data center facilities are extremely sensitive to downtime, delays in adding power distribution circuits, and inefficiencies. However, with Starline Track Busway, power distribution has been revolutionized. This simple, versatile, and economical solution for supplying power is unique because Starline Track Busway can be tapped instantly at any location, without any downtime.



Having Starline Track Busway power your mission critical facilities gives you the advantage:

- Maintenance-free track busway design has been field-proven in data centers for over 30 years.
- Plug-in units can be positioned at any point along the busway for maximum versatility.
- Customization of plug-in units for any environment.
- Easiest installation of plug-in units – just insert and turn.
- No complicated mechanisms or levers.
- Most reliable plug-in design with the least amount of electrical connections from busway to plug-in unit.
- Interchangeable plugs for systems including: 250T5, 400T5, 600T5, 800T5 & 1200T5.
- Multiple busway feed options: end, top, center – for installation flexibility.
- Available in lengths up to 10 or 20 feet (3 or 6 meters) for faster installation.
- Services department offering customizable training, certification, ongoing support and warranty programs





Reduced Facility Construction Costs

- Labor savings mean installation is less expensive.
- Eliminates costly change orders and outside labor costs for electrical specialists.
- Lower cost of ownership.



Faster Installation

- Building projects are up and running faster.
- Add, remove or relocate power easily and quickly with no downtime.



Flexibility for the Future

- Plug-in units can be disconnected and connected without de-energizing the busway.
- Requires no routine maintenance.



Environmentally Friendly

- Less installation materials.
- Busway and outlets are reusable and re-locatable.



More Choices

- Customizable for any environment, space or power requirement.
- Designed specifically for mission critical and data center environments – T5 plug-in units are compatible with all T5 systems.
- Scalable, reusable and customizable lengths, sizes, colors and configurations to meet your unique specifications.



Field Services

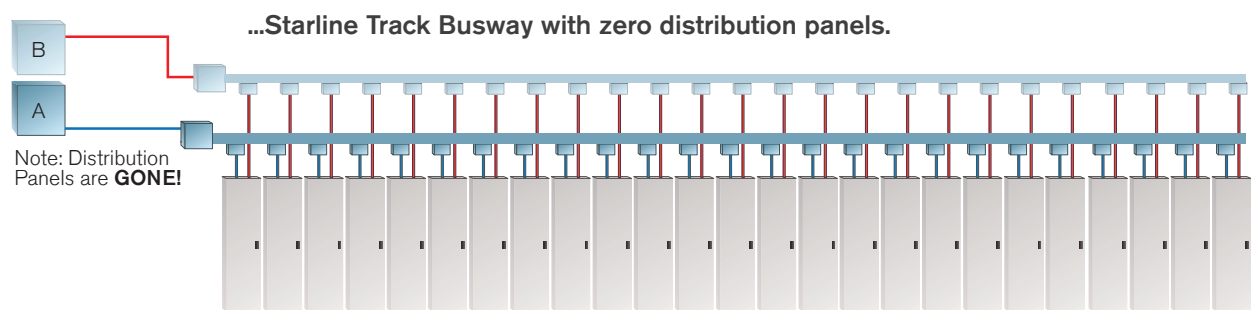
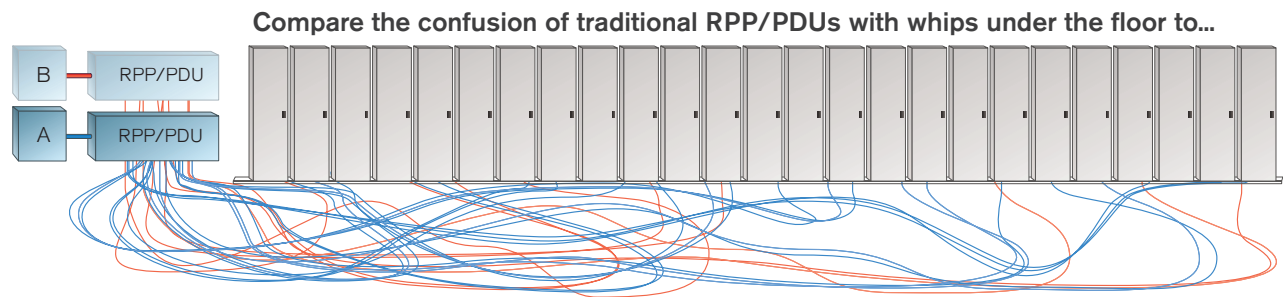
- On-site support and system startup
- Ongoing support plans and warranty programs
- Metering services and integration
- Engineering studies
- Load bank testing and equipment rentals

The power of simplicity.

With ever-increasing demands on IT infrastructure, data center owners and operators are challenged with keeping pace. One solution has been to increase the power density within the facility. This continual cycle of increasing power requirements for the critical equipment in the racks and cabinets has translated into more and more cables under the raised-floor or overhead.

But Starline Track Busway is a self-contained system, so there is no jungle of wires to obstruct air flow. This makes it one of the most energy efficient systems you can buy in today's "green building" environment. Starline is modular, build-as-you-need, and equipped for high-density electrical distribution. And it's designed and rated to meet and exceed the rigorous reliability demands and thermal requirements of mission critical facilities.

Starline also eliminates all the distribution panels associated with traditional systems, so changes and additions can be easily made without shutting off power. Unlike other busway systems, Starline's plug-in units are lighter and have only one connection point, yet they deliver the same amount of power as heavier, more cumbersome units. The all-in-one, self-contained plug-in units can also be inserted anywhere along the busway in almost any NEMA configuration, and have fewer mechanical joints for reliability and efficiency. This busway system offers plug-in units with a wide variety of receptacles, circuit breakers, and drop cords. Multiple circuit breaker plug-ins are offered and can be used in high-density applications. The simple "turn-n-lock" connection at the heart of the system has transformed the design and lowered the costs of maintaining and upgrading today's data centers.



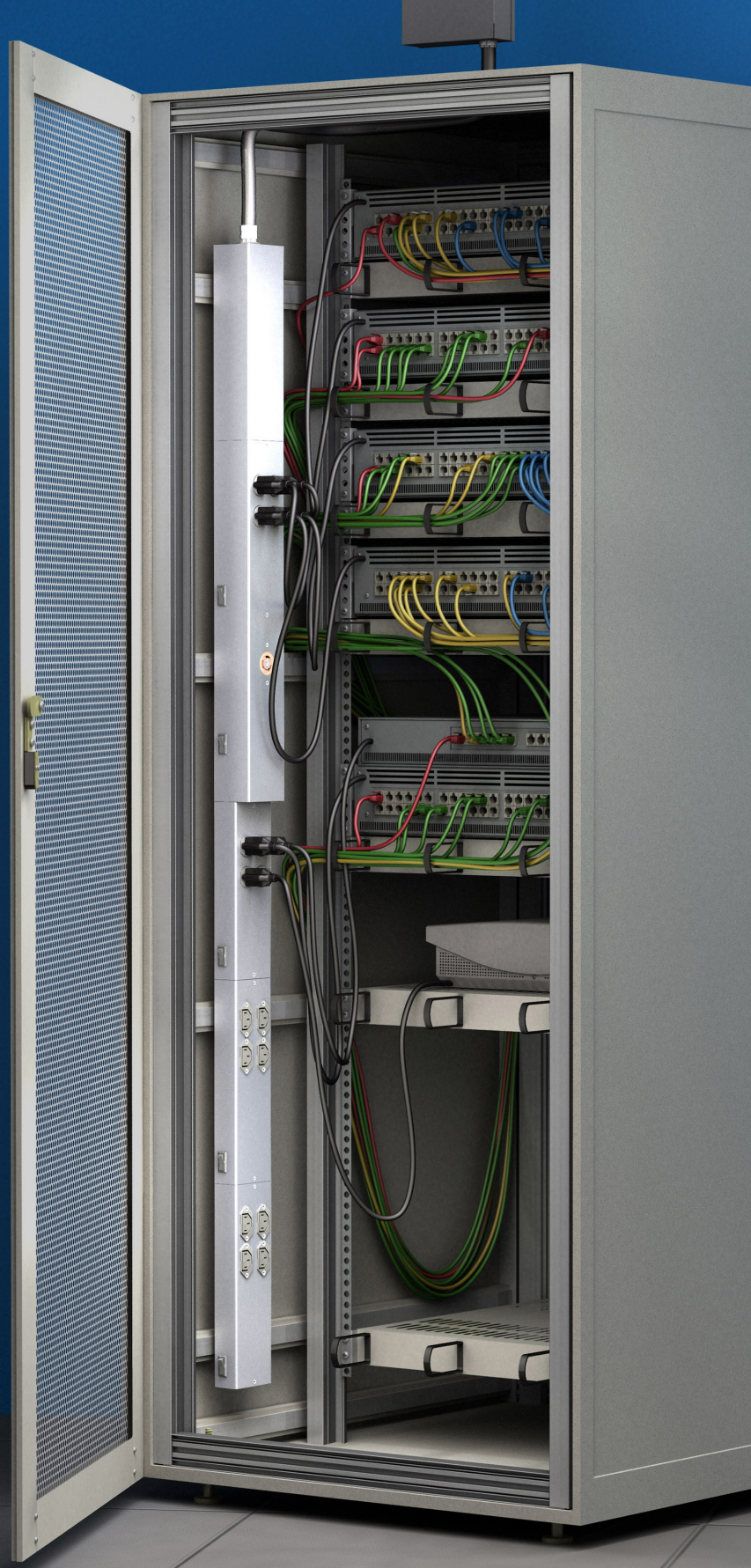
Specifications	Track Busway System Ratings					
Ampacity	225	250	400	600	800	1200
Rated Voltage	600 AC or DC	600 AC or DC	600 AC or DC	600 AC or DC	600 AC or DC	600 AC or DC
Rated Short Circuit Capacity	22kAIC	35kAIC	42kAIC	65kAIC	65kAIC	75kAIC
Conductor Type	Copper	Copper	Copper	Copper Contact	Copper Contact	Copper Contact
Frequency Ratings	50/60Hz	50/60Hz	50/60Hz	50/60Hz	50/60Hz	50/60Hz
Testing Criteria	UL857, IEC 61435	UL857, IEC 61435	UL857, IEC 61435	UL857, IEC 61435	UL857, IEC 61435	UL857, IEC 61435
Housing Material	Extruded Aluminum	Extruded Aluminum	Extruded Aluminum	Extruded Aluminum	Extruded Aluminum	Extruded Aluminum
System Weight Straight sections based on 4 pole	1ft (.3m) = 3.4lbs (1.54kg)	1ft (.3m) = 4.1lbs (1.86kg)	1ft (.3m) = 9.5lbs (4.31kg)	CU 1ft (.3m) = 19.6lbs (8.89kg) CU/AL 1ft (.3m) = 11.5lbs (5.52kg)	CU 1ft (.3m) = 19.6lbs (8.89kg) CU/AL 1ft (.3m) = 11.5lbs (5.52kg)	1ft (.3m) = 21lbs (9.53kg)
Support Distance	Max distance 10ft (3m)	Max distance 10ft (3m)	Max distance 10ft (3m)	Max distance 10ft (3m)	Max distance 10ft (3m)	Max distance 10ft (3m)
Available Lengths	Up to 20ft (6m)	Up to 20ft (6m)	Up to 20ft (6m)	Up to 10ft (3m)	Up to 10ft (3m)	Up to 10ft (3m)

STARLINE

PLUG-IN RACEWAY

Cabinet Busway Series offers flexible power for server cabinets.

The Cabinet Busway Series was specifically developed to offer flexible power that can accommodate high density power requirements within server cabinets. The series can provide up to 3-phase, 60 amp power through 480Vac. Installed in your cabinet or rack, each unit comes with a corded plug and modular backplane where you have the ability to select the plug-in units to meet the equipment needs of servers, storage arrays, network gear, or other devices installed in the cabinet. The Cabinet Busway Series also offers optional metering functionality for those interested in monitoring and improving their energy efficiency.



STARLINE

CRITICAL POWER MONITOR



Real-time monitoring for peak efficiency.

Because of the market's growing need for energy efficiency, energy monitoring systems are more important than ever. The Starline Critical Power Monitor (CPM) offers an enhanced monitoring package that will allow you to monitor, integrate and display more data center power information easily and reliably.

The Starline CPM offers:

- Revenue grade metering functionality
- Monitors multi-circuit configurations
- End feed and branch circuit models
- Display and non-display versions available
- Wired Ethernet and serial communications are standard, optional 802.11n Wi-Fi connectivity
- Ability to use both serial Modbus and Ethernet-based protocols simultaneously
- Daisy-chain Ethernet available
- Optional temperature monitoring
- Both Vac and DC versions available



TEMPERATURE MONITOR

- Automated real-time temperature data
- Eliminates need to periodically IR scan
- Data available for end user analysis via webpage



CORDED CPM

- Easy method to add metering capabilities to your existing installation
- No modifications needed to existing infrastructure
- Capable of monitoring the energy of any device



RETROFIT CPM

- Cost effective option for the addition or upgrade of existing Starline systems in the field
- Implementation can be accomplished on-site
- Utilize existing end feed and/or installed plug-in units



FACTORY UPGRADE

- Add or upgrade metering capabilities to an existing installation
- Implementation can be accomplished on-site
- Factory installed and tested to ensure work has been completed properly



Choice of Extended Warranty or Enhanced: Silver, Gold or Platinum Service Plans	Extended 1, 2, 3, 4 years	Silver 1, 2, 3, 4 years	Gold 1, 2, 3, 4 years	Platinum 2, 3, 4 years
Repair or replacement of defective parts throughout life of service agreement	x	x	x	x
24/7 technical support hotline	x	x	x	x
Visual inspection of meters		x	x	x
Visual inspection of all joints for visible gaps		x	x	x
Update firmware and verify all Starline CPMs		x	x	x
Includes travel and expenses		x	x	x
One (1) service site visit per year		x		
Two (2) service site visits per year			x	x
Thermal imaging of all plug-in units			x	x
Thermal imaging of all Busway joints			x	x
Thermal imaging of all end feed units			x	x
Detailed and fully executed thermography report			x	x
Online portal for test reports & documentation			x	x
Spare parts inventory management program				x

LOAD BANK TESTING AND EQUIPMENT RENTALS

Factory trained and certified technicians will load bank test and commission Busway system to client's specifications

Reliable source for load bank rental equipment delivered to site when you need it

METER SERVICES

Certified technicians will safely and efficiently program meters

Technicians can integrate your CPM devices so that you can focus on operational goals

Real-time data delivers the analytics to make better operational decisions

STARTUP AND SYSTEM CERTIFICATION

The system certification process helps mitigate issues and risks associated with startup by proactively inspecting, testing and reporting on Starline products

Our on-site technicians will rely on proven best practices and operational compliance standards to help meet your commissioning deadlines

Upon successful completion of system startup, Starline's standard manufacturer's warranty will be automatically extended in duration

ENGINEERING STUDIES (US ONLY)

Engineering Studies allow for compliance to safety standards

Engineers will provide facility electrical studies, recommend corrective actions or confirm your systems reliability and compliance with government and safety requirements

ON-SITE INSTALLATION SUPPORT

Confirm equipment delivery and quality

Contractor training on best practices for installation

Visual inspection of proper system installation

Expedited part replacement (if required)

ON-SITE PRODUCT TRAINING

Classroom and hands-on Busway training

Proven course curriculum is thorough and effective meeting Starline's rigorous installation and operational standards

Improve operator safety and learn best practices to care for your product



For more information on service offerings, ask your Starline Sales Representative or download the detailed Statement of Work documents at: <http://downloads.uecorp.com/services/>

Universal Electric Corporation (UEC), the manufacturer of Starline, has been a leader in power distribution since 1924. The company's founders led the way for many new technologies in the power distribution equipment industry. Today, this family tradition of innovation continues to pave the way for safer, more innovative and more reliable electrical power distribution systems. Visit www.StarlinePower.com for your flexible power solutions.



uecorp.com | starlinepower.com



North American Headquarters

168 Georgetown Road | Canonsburg, PA 15317 | USA | info@uecorp.com | +1 800-245-6378

UK & Northern Europe

Unit C Island Road | Reading RG2 0RP | UK | emea.info@uecorp.com | +44 (0) 1183-043180

Asia Pacific Region

16D Tuas Avenue 1 | #04-60/62 | JTC Space @ Tuas | Singapore 639536 | apac.info@uecorp.com | +65 6950-1247

